

Amphenol Commercial Products
High Speed I/O Products



Amphenol

Now you're connected!

Amphenol

IO Product Offering

Amphenol Commercial Products provide a wide range of input/output connectors for a variety of different market segments and applications.

Our product family includes, but is not limited to, High Speed IO Products, Modular Jacks, Filtered D-sub's and Micro-ribbon connectors and Power connectors.



Filtered Connectors

Amphenol Canada filter connectors use the most popular filter element, a chip capacitor. The chips are mounted inside the connector between each of the contacts and the connector ground shell. This filter technology forms one neat, compact interconnect device that can filter unwanted EMI.



CoolPower Connectors

Amphenol CoolPower connectors are intended for medium and high current applications, bringing power from the source to the system. Connector solutions package high power availability in a small form factor.

CoolPower connectors offer design flexibility and can be made to fit virtually any requirement.



Modular Jacks

Amphenol offers one of the broadest product ranges of PCB mounted RJ11/RJ45 Modular Jacks with exceptional quality and performance. Our extensive range is built to suit customer environments and addresses many customer applications. Our products include Single port, Multi-port - stacked or ganged in a variety of shielding, filtering and LED options.



For up to date RoHS information please check:

<http://www.amphenolcanada.com/ProductSearch/RoHS/ACP%20RoHS%20Green.html>

Comparison of various High Speed IO technologies

INTERFACE	# LANES OR CHANNELS	CAPABLE RATE PER LANE	MAXIMUM BW PER PORT	REPRESENTATIVE PRODUCT
VHDCI	16	2.5 GBPS	40 GBPS	
4X INFINIBAND	4	UP TO 5 GBPS	10 - 20 GBPS	
12X INFINIBAND	12	UP TO 5 GBPS	30 - 60 GBPS	
SFP	1 PER PORT	UP TO 2.5 GBPS	2.5 GBPS	
SFP ENHANCED	1 PER PORT	UP TO 4 GBPS	4 GBPS	
SFP+ / IPF	1 PER PORT	UP TO 10 GBPS	10 GBPS	
MINI-SAS	4 PER PORT	UP TO 6 GBPS	24 GBPS	
XFP	1 PER PORT	10 GBPS	10 GBPS	
QSFP	4 PER PORT	10 GBPS	40 GBPS	

Markets Served



Storage & HDD

Hard Disk Drives, Micro-drives,
Optical Drives, Tape Drives,
Network Storage,
RAID / JBOD Storage



Telecom

ADSL Access, Cellular Base Stations,
Radio Links, Mobile Switches,
Antenna Systems, Combiners,
Transceivers,
Filters and Tower Amplifiers



Networking

Network Switches, Routers, Hubs,
Network Interface Cards,
Host Bus Adapters, VOIP,
WiFi Base Stations



Server & Computer

Application Servers, Blade Servers,
Workstations,
Host Bus Adapters Servers,
Desktop PCs, Notebook PCs,
Supercomputers PCs,
Multimedia, Peripherals

Receptacle



Very High Density Cable Interconnect provides interconnections where space limitations and high performance are key requirements. Designed to be compact, these fully shielded connectors support ESD/EMI protection, are capable of transferring data up to 80 Gbps and meet EIA700A0AF specifications. Receptacles are available in both right angle and straddle-mount configurations with or without shield EMI tabs.

Applications

- Ultra-SCSI
- Ultra-320
- SFF-8441
- EA1700A0AF
- RAID
- Disk Drives/Systems
- Servers
- SANs (Storage Area Networks)
- Routers

Ordering Information

Contact Amphenol for additional options

VHDCI Receptacle

H11 - XXX - XXX - X* - XX*

VHDCI RECEPTACLE

H11 - Standard receptacle
HE11 - RoHS receptacle

STYLE

RAA - Right angle, single port
RDA - Straddle mount, single port

OPTIONS

100 - No screwlocks, standard shell
101 - Screwlocks bulk packed, standard shell
110 - No screwlocks (standard), shell without EMI tabs
111 - Screwlocks bulk packed, shell without EMI tabs

STRADDLE MOUNT PACKAGING

C - Plug cover and tube packaging*
T - Tape & reel packaging*
CT - Plug cover and tape & reel packaging*

TAIL LENGTH OPTIONS

Blank - standard**
1 - 0.125" contact tails**
3 - 0.062" PCB thickness*
4 - 0.093" PCB thickness*

Notes

* RDA Style Only
** RAA Style Only
Available in tube packaging only

Infinity

Receptacle



Amphenol's INFINITY (4X/12X) series of connectors facilitate data speeds up to 60 Gbps total bandwidth, as required by InfiniBand™, Fibre Channel and Serial Attached SCSI Trade Associations, with superior EMI performance. INFINITY connectors are high-density, hot pluggable and meet SFF-8470 specifications.

A variety of receptacles are available that will fit multiple connectors into a 1U form factor and PCI bracket. All receptacles are available with standard or RoHS compliant materials. Capable of data rates beyond 5.0 Gbps per channel. Available in 4X and 12X versions, lanyard latch and screw lock styles available.

Applications

- InfiniBand™
- Fibre Channel
- 10Gb Ethernet
- SAS, External (Serial Attached SCSI)
- SFF-8470
- CX4
- Datacom Devices
- HCAs (Host Controller Adapters)
- High Speed Routers and Switches
- Storage Devices
- SANs (Storage Area Networks)
- Servers
- RAID
- XAUI

Product Specification for InfiniBand connector system

Mechanical Characteristics

Insertion force: 55.5 N maximum (for 4X version)
Withdrawal force: 6.1 N typical (for 4X version)
Durability: 250 mating cycles
Coplanarity: 0.1mm

Electrical Characteristics

Impedance: 90 – 100Ω
Rise time for impedance measurement: 70 ps
Within pair skew: 5 ps
Return Loss: Meets SFF8470 spec
LLCR: 80 mΩ max
Insulation Resistance: 10 GΩ at 100 VDC
DWV: 100 VRMS for 60 seconds

Materials

Contacts

- Base material – Copper alloy
- Plating
 - Mating area – refer to p/n table
 - Solder tails – refer to p/n table

Shell

- Base material – Zinc alloy #3
- Plating – 100μ" Nickel plated

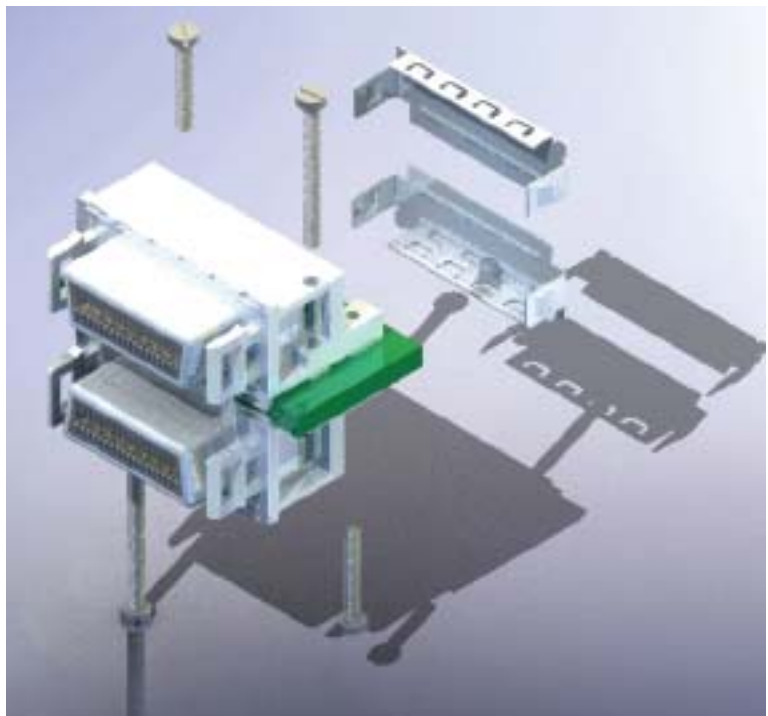
Housings: Black color, glass-reinforced, lead-free solder reflow process compatible thermoplastic, UL94V-0 rated

Temperature rise: Meets the requirement of 30°C ΔT

Operating temperature -40° to +85°C
Storage temperature -40° to +85°C



Thumbscrew with locating posts



Belly to belly

www.infinityconnectors.com

Telephone: (416) 291-4401 Fax: (416) 754-8668 E-Mail: sales@amphenolcanada.com

All specifications are subject to change without notice.

Ordering Information

Contact Amphenol for additional options

Infinity Receptacle

U65 - X XX - X X X 0 - X

SERIES DESIGNATION

STYLE

- B - Solder posts (with locating post)
- C - Same as B, long s-post for 4mm PCB
- E - M2 screw mount (with locating post)
- F - Belly to Belly design
- H - (2) M2 screw mount in front and (2) solder posts in back
(6-PCB hole applications only)
- J - Same as B, 3.3mm long posts

NO OF CHANNELS

- 04 - 4X
- 12 - 12X

CONTACT PLATING

- 1 - 50µ" gold plating
- 2 - 30µ" gold plating
- 4 - 50µ" gold plating (RoHS)
- 5 - 30µ" gold plating (RoHS)

ACCESSORIES OPTION

- 0 - Ship with C-clips or regular jack screw
- 1 - One piece clip or self-locking jack screw
- 2 - No locking plate or jack screw (order separately)
- 3 - No locking plate and no EMI gasket or no jack screw and no gasket
- 4 - No locking plate and with special EMI gasket (Lanyard only)

Notes

- * Lanyard application only
- ** Screwlock application only
- *** Screwlock 12X application only

PACKAGING

- None - Tray packaging
- T - Tape and reel packaging
- C - Rear cover / tray packaging
- CT - Rear cover / tape & reel packaging
M2 Screw Mount Application
- M - M2 screws included / tray packaging
- MT - M2 screws included / tape and reel packaging
- CM - Rear cover w/ M2 screws included / tray packaging
- CMT - Rear cover w/ M2 screws included / T&R packaging

KEYING OPTION OR MODIFIER:

- 0 - Standard (no keying)

APPLICATION:

- 1 - Lanyard latch style
- 2 - Screw lock style
- 6 - Lanyard latch style for 6-PCB holes
- 8 - Screw lock style for 6-PCB holes
- 7 - Same as 6 with top mounting ear
- 9 - Same as 8 with top mounting ear

INFINITY RECEPTACLE ACCESSORIES (ORDER SEPARATELY)

- U65-404-21-P = 4X One-piece lock plate*
- U65-404-60-P = 4X Optional rear cover
- U65-404-61-P = 4X Belly-To-Belly Optional rear cover
- U65-412-21-P = 12X One-piece lock plate*
- U65-412-60-P = 12X Optional rear cover
- U65-404-40-P = Thumbscrews (standard)**
- U65-404-41-P = Thumbscrews (self-locking w/Nylok)**



Lanyard latch with rear arms and solder posts



Lanyard latch with rear arms, screw mount



Lanyard latch with top mounting, rear arms

SFP

Single Port Multi-Port Ganged



Amphenol's SFP connector series is a 20 position connector and cage combo for mounting to a host PCB with a metal cage enclosing the connector. These connectors are similar to the Gigabit Interface Converter Interface (GBIC), but they are smaller in size and operate at much faster data transfer rates.

Amphenol single port and stacked versions are rated up to 10 Gbps. They are available in standard RoHS compliant or non-RoHS compliant versions. The cages are a one-piece construction with enhanced transceiver mating tabs presently available in press-fit version, with solder version and longer or shorter pins available as custom options.

Applications

- Fibre Channel
- Gigabit Ethernet
- InfiniBand™
- Servers
- Routers
- Storage Devices
- Switches
- Optical Devices
- Networking Devices

Product Specification for SFP cages and connector system

The interconnect system comprises of an SFP cage assembly which is used with 20 position SFP connectors complying with MSA Agreement INF-8074i.

Availability: 1X1, 1x2, 1x4 and 1x6 cages as well as versions with heat sinks and light pipes, including stacked 2x1 and 2x4 are available. SFP+ and enhanced EMI performance cages also available.

General Requirements

- RoHS compliant
- Cages are tray packaged or tape and reel (single port)
- Dust cover for front face is available (bulk packed)
- Industry standard EIA-364

Temperature Rating

- Operating Temperature = -55°C to +85°C
- Storage Temperature = -55°C to +105°C

Mechanical Characteristics

Accepts multiple transceivers per INF-8074i
Durability of 250 mating cycles

Packaging

- Tape and reel available for single port,
Tray packaging for all sizes.
- Bulk packaged dust covers

Electrical Characteristics

Hot swappable
Operating voltage 3.3V at 0.5A maximum
Cages include spring contacts for superior EMI grounding
Selected versions provide enhanced EMI shielding through the use of supplementary ground tabs.

Materials

Cage: Copper alloy, nickel plated.
Selected versions available with matte tin over nickel.

- Enhanced EMI versions incorporate stainless steel ground tabs

Connectors:

- Contacts: Copper alloy plating - refer to p/n table
- Housing: Glass reinforced lead-free process solder reflow compatible UL94V-0

www.sfpconnectors.com

Telephone: (416) 291-4401 Fax: (416) 754-8668 E-Mail: sales@amphenolcanada.com

All specifications are subject to change without notice.

SFP

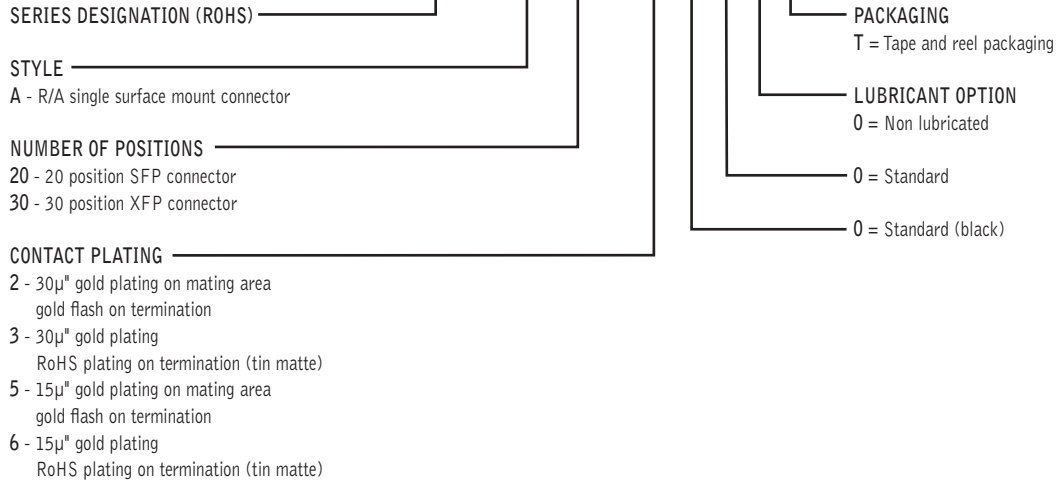
Single Port Multi-Port Ganged



Ordering Information

Contact Amphenol for additional options

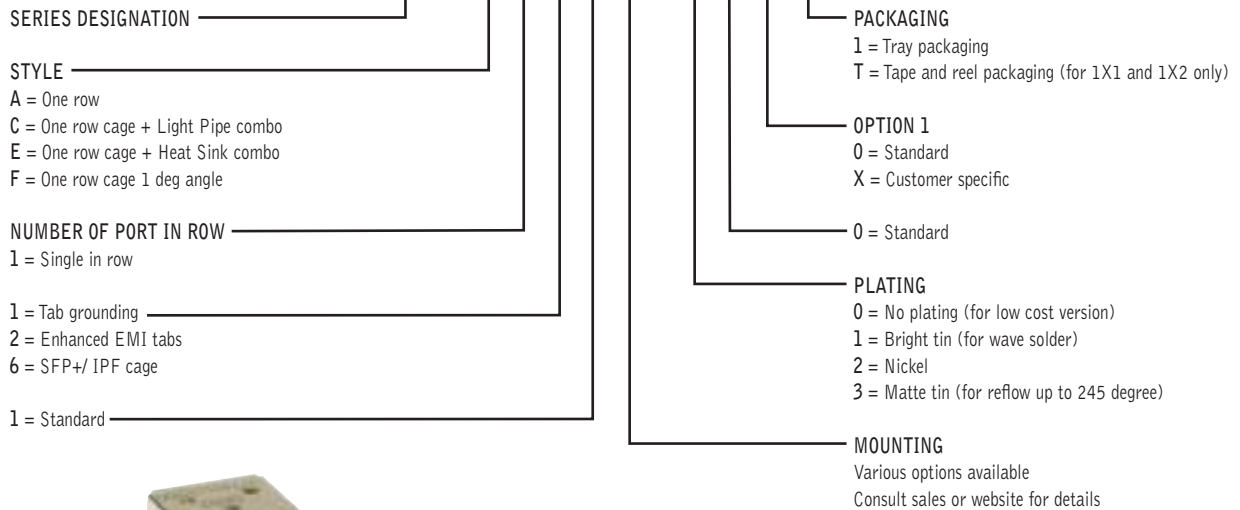
SFP & XFP Connector UE75 - A X0 - X 0 0 0 T



Ordering Information

Contact Amphenol for additional options

SFP Cage U77 - X 1 1 1 X - X 0 X X



www.sfpconnectors.com

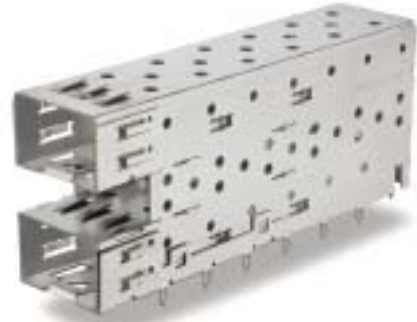
Telephone: (416) 291-4401 Fax: (416) 754-8668 E-Mail: sales@amphenolcanada.com

All specifications are subject to change without notice.

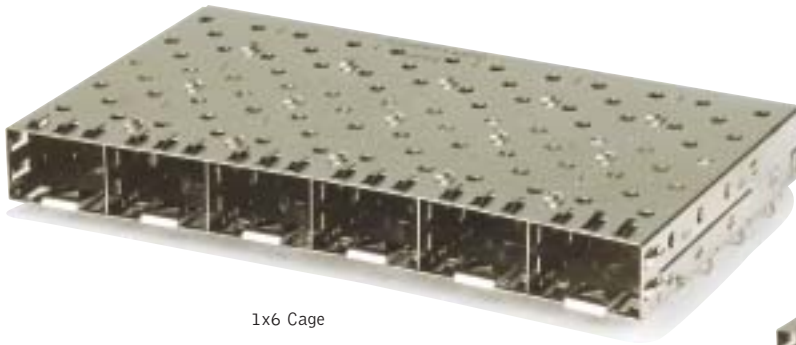
Ganged & Stacked Options



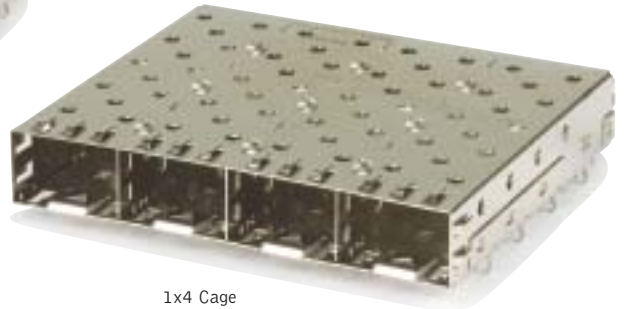
2x1 SFP Cage & Connector Combo



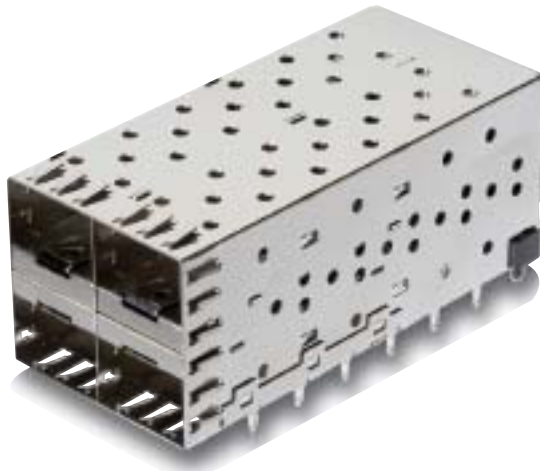
Custom 2x1 SFP Cage & Connector Combo



1x6 Cage



1x4 Cage



2x2 Combo (planned)

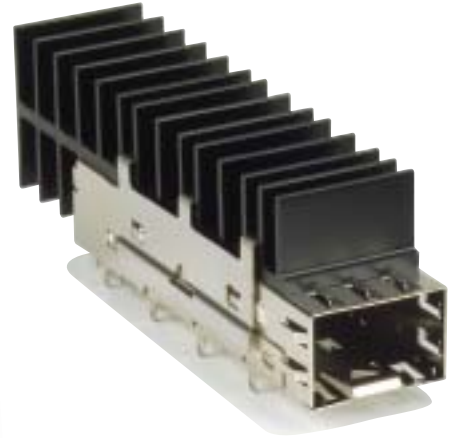


2x4 Combo

Heat Sinks & Light Pipe Options



1x4 SFP cage with heat sinks



Single port SFP cage with heat sinks



1x4 SFP cage with light pipes



1x6 SFP cage with light pipes

SFP Combos

ORDERING INFORMATION

Contact Amphenol for additional options

SFP Cage & Connector

U X 78 - X X 1 1 X - X X X X X

SERIES DESIGNATION

RoHS 5 for Press Fit Pins on connector
RoHS 6 for Through Hole Pins on connector

STYLE

- A - Single connector + cage combo
- B - Stacked connector and cage
- C - Single/stacked con, cage, Light Pipe (on Top) combo
- D - Stacked connector+cage, Light Pipe (in the cage)
- L - Stacked low profile combo

NUMBER OF PORT IN ROW

- 1 - 1X1 or 2X1
- 2 - 1X2 or 2X2
- 4 - 1X4 or 2X4

1 - Standard

1 - Standard

X - Various options available, customer specific
Consult sales or website for details

PACKAGING

- 1 - Tray packaging (stacked)
- T - Tape and reel packaging
(Both connector and cage)
- H - T&R for connector/tray for cage
(for 1Xn only)

PLATING OPTIONS FOR CAGE

- 1 - Bright tin (for wave soldering)
- 2 - Nickel
- 3 - Matte tin (for SMT soldering)

PLATING OPTIONS FOR CONNECTOR

- 1 - 30µ" gold plating on mating area
150-300µ" tin/lead on termination
- 2 - 30µ" gold plating on mating area
gold flash on termination
- 3 - 30µ" gold plating on mating area
150-300µ" matte tin on termination
- 4 - 15µ" gold plating on mating area
150-300µ" tin/lead on termination
- 5 - 15µ" gold plating on mating area
gold flash on termination
- 6 - 15µ" gold plating on mating area
150-300µ" matte tin on termination

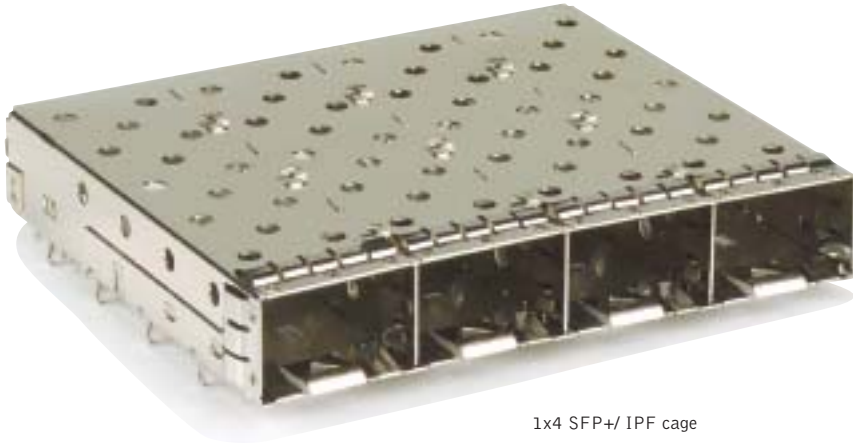
OPTIONAL DUST COVER

- 0 - Without dust cover
- D - With dust cover (shipped loose)

HEAT SINK / LIGHT PIPE OPTION

- 0 - None
- X - Other options available, customer specific

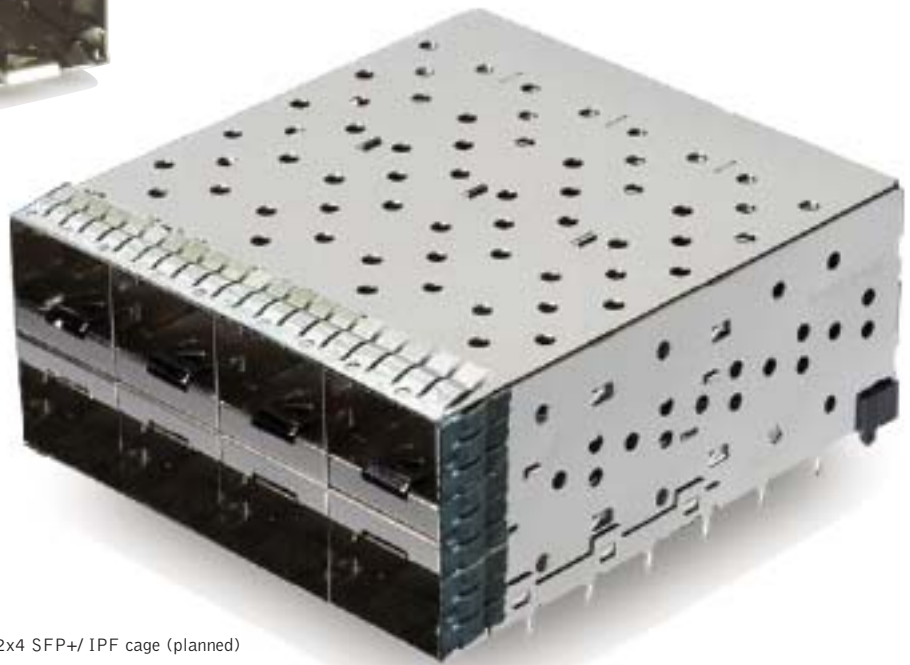
SFP Plus & SFP Enhanced



1x4 SFP+/ IPF cage



1x2 SFP+/ IPF cage



2x4 SFP+/ IPF cage (planned)

MINI-SAS

FS Series



Amphenol's latest addition to the high speed family, this connection system of the Compact MultiLane Connector is based on industry proven card edge style contacts. This connector system is designed to satisfy the needs for gigabit serial data transmission applications with signal speeds across the connector interface at speeds of up to 6 Gbps on both rows of contacts.

The cage is mounted separately to the body so that the stress imposed by insertion and removal of the cable plug does not affect the signal/body solder joints.

The interconnect system comprises of a high-speed serial interconnect system complying with the SFF8086, SFF8087, and SFF8088 specifications.

Applications

Supporting multiple data transfer protocols:
• Serial Attached SCSI Mini SAS 4x

- Servers
- Routers
- Storage Devices

Product Specification for Mini-SAS connector system

Connector Mechanical Characteristics

26 position 0.8mm pitch SMT receptacle
Coplanarity spec 0.1mm
Insertion force: 55.5 N maximum
Withdrawal force: 49.0 N maximum
Durability: 250 mating cycles

Cage Mechanical Characteristics

Single and 1x2 cages available
Standard (1° angle) and 0° versions
Multiple keying according to SFF8088
Includes EMC gasket and appropriate M2 mounting screws

Connector Electrical Characteristics

Maximum current: 0.5A per contact
Maximum voltage: 30V per contact
LLCR: 80 mΩ max
Insulation Resistance: 1000 MΩ at 100V DC for 60 seconds
DWV: 300 V minimum DC for 60 seconds

Materials

Connector

- Contacts
 - Base material – copper alloy
 - Plating - refer to p/n table for options
- Housings: Black color, glass-reinforced, lead-free solder reflow process compatible thermoplastic, UL94V-0 rated

Cage

- Base material – zinc alloy #3
- Plating – 100µ" nickel plated

Gasket

- Conductive elastomeric foam or metal spring fingers

Operating temperature -55° to +85°C
Storage temperature -55° to +85°C

Process Characteristics

Connectors are tape and reel packaged for robotic pick-and-place in accordance with EIA-481-C. Cages are packaged in trays with mounting screws separately bagged.

Ordering Information

Contact Amphenol for additional options

FS Series Connector Part Numbers

FS1 - R26 - X 0 0 X

R26 - 26 position connector

OPTIONS

- 0 - Standard connector
- 1 - Connector with hold down tabs

PLATING

- 2 - 50µ" nickel under-plate all over,
30µ" gold in mating area/ 100µ" matte tin on tails
- 3 - 50µ" nickel under-plate all over,
15µ" gold in mating area/ 100µ" matte tin on tails

www.mini-sas.com

Telephone: (416) 291-4401 Fax: (416) 754-8668 E-Mail: sales@amphenolcanada.com

All specifications are subject to change without notice.

MINI-SAS

FS Series

Ordering Information

Contact Amphenol for additional options

FS Series Cage Part Numbers

FS1 - S X X - 1 X X X - X X

SIZE AND CONFIGURATION

- 01 - 1X - 1 deg
- F1 - 1X - 0 deg
- 02 - 2X - 1 deg
- F2 - 2X - 0 deg
- 04 - 4X - 1 deg
- F4 - 4X - 0 deg

Special

OPTION

- E1 - EMC gasket
- E2 - EMC gasket - no mounting screws
- F1 - Foam gasket

KEYING

- 0 - No key
- 1 - Key #1
- 2 - Key #2
- 3 - Key #3
- 4 - Key #4
- 5 - Key #5
- 6 - Key #6
- 7 - Key #7
- 24 - Key #2 and #4
- 46 - Key #4 and #6
- 22 - LEFT PORT Key #2 & #4 / RIGHT PORT Key #2 & #4
- 66 - LEFT PORT Key #4 & #6 / RIGHT PORT Key #4 & #6
- 26 - LEFT PORT Key #2 & #4 / RIGHT PORT Key #4 & #6
- 62 - LEFT PORT Key #4 & #6 / RIGHT PORT Key #2 & #4

PLATING

- 1 - Nickel (ROHS)



Single port cage with conductive foam gasket



Single port cage with spring fingers gasket



1x2 cage with conductive foam gasket



1x4 cage with spring fingers gasket

www.mini-sas.com

Telephone: (416) 291-4401 Fax: (416) 754-8668 E-Mail: sales@amphenolcanada.com

All specifications are subject to change without notice.



The interconnect system comprises a 30 position 0.8mm pitch connector and a press-fit cage designed to interface with the XFP module as detailed in INF-8077i "10 Gigabit Small Form Factor Pluggable Module".

The connector system is capable of a 10 Gigabits data rate and is intended for external connections.

Applications

- Clusters
- Servers
- Storage devices
- Networking

Supporting multiple data transfer protocols:

- SONET – OC-192 and G.709 "OUT-2"
- 10 Gb/s Ethernet
- 10Gb/s Fibre Channel

Product Specification for XFP connector system

Connector Mechanical Characteristics

30 position 0.8mm pitch SMT receptacle
Durability: 250 mating cycles

Cage Mechanical Characteristics

Cages available with and without Heat Sinks
Cages are press-fit into PCBs
Insertion force: 40 N maximum (Cage and connector)
Withdrawal force: 30 N maximum (Cage and connector)
Cage Retention: 180 N minimum (Latch strength)

Connector Electrical Characteristics

Maximum current: 0.5A per contact
Maximum voltage: 30V per contact
LLCR: 70 mΩ max
Δ LLCR: 20 mΩ max
Insulation Resistance: 1000 MΩ at 100V DC for 60 seconds
DWV: 300 V minimum DC for 60 seconds

Signal Integrity Requirements
Differential impedance: 95 – 105Ω
Near – End isolation: -40dB
Insertion Loss: 1.0dB maximum

Materials

Connector

- Contacts
 - Base material – Copper alloy
 - Plating
 - Mating area – refer to p/n table
 - Solder tails – refer to p/n table
- Housings: Black color; glass-reinforced, lead-free solder reflow process compatible thermoplastic, UL94V-0 rated

Temperature rise: Meets the requirement of 30°C ΔT

Cage

- Base material – Copper alloy
- Plating – 100μ" Nickel plated

Front Flange

- Base material – Die cast Zinc

Gaskets

- Base material – Conductive Elastomer

Heat Sink

- Base material – Anodized Aluminum

Heat Sink Clip

- Base material – Steel

Operating temperature -40° to +85°C

Storage temperature -40° to +85°C

Ordering Information

Contact Amphenol for additional options

XFP Cage

U79 - A 1 X 1 - 2 X X X

SERIES DESIGNATION

STYLE

A - One row

NUMBER OF PORT IN ROW

1 - Single row

HEAT SINK OPTION

1 - No Heat Sink, no clip

2 - Std Height Heat Sink and clip shipped loose

3 - PCI Height Heat Sink and clip shipped loose

4 - Tall Heat Sink and clip Shipped loose

PACKAGING

1 - Tray packaging

T - Tape and reel packaging

EMI GASKET OPTIONS

0 - Standard

1 - High conductivity rear lower EMI gasket

DUST COVER OPTIONS

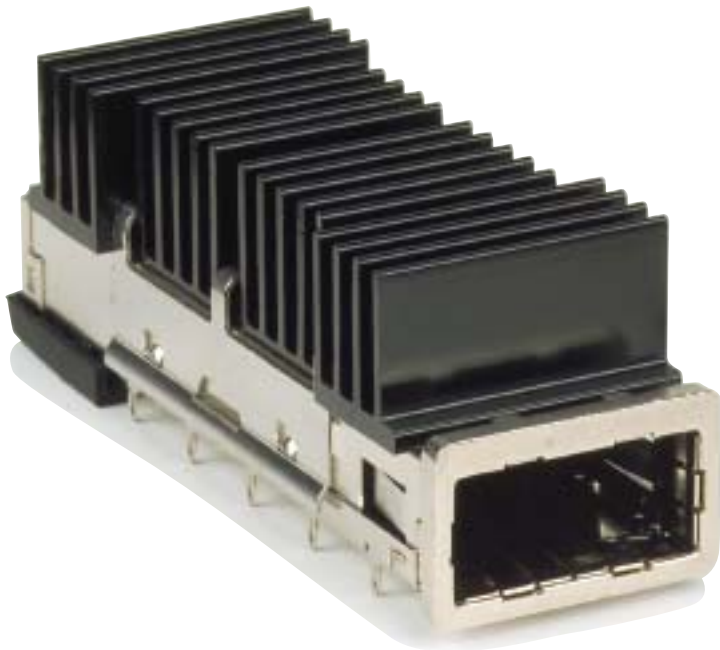
0 - Without dust cover

D - With dust cover (Ship loose)

PLATING

2 - Nickel

Standard



XFP with Tall Heat Sink option



QSFP



The interconnect system comprises a 38 position 0.8mm pitch connector and a press-fit cage designed to comply with the Quad Small Form-factor Pluggable (QSFP) Transceiver Specifications.

The connector system is capable of data rates beyond 5 Gigabits per channel (4 channels) and is intended for external connections (38 position connector).

Applications

- Clusters
- Servers
- Storage devices

Supporting multiple data transfer protocols:

- Infiniband – 4x SDR/DDR
- SONET/SDH – OC-12/OC-48
- 10 Gigabit Ethernet / 4 x 3.125 Gb/s
- Quad Fibre Channel (1/2/4 Gb/s)
- PCI Express 4x

Product Specification for QSFP connector system

Connector Mechanical Characteristics

Insertion force: 40 N maximum
Withdrawal force: 30 N maximum
Durability: 250 mating cycles

Cage Mechanical Characteristics

Cages available with and without Heat Sinks
Cages are press-fit into PCBs
Cage is keyed according to QSFP MSA

Connector Electrical Characteristics

Maximum current: 0.5A per contact
Maximum voltage: 30V per contact
LLCR: 80 mΩ max
Insulation Resistance: 1000 MΩ at 100V DC for 60 seconds
DWV: 300 V minimum DC for 60 seconds

Signal Integrity Requirements

Return Loss: 10dB
Near end isolation: -40dB (frequencies up to 3 GHz)
Insertion loss: 0.13 dB maximum (frequencies up to 1.25 GHz)
0.25 dB maximum (frequencies 1.25 – 2.50 GHz)
0.25 dB maximum (frequencies 2.50 – 5.00 GHz)
Differential impedance: 90 – 110 Ω
Rise time for impedance measurement: 25 ps
Within pair skew: <1 ps
NEXT: ≤ 2%

Materials

Connector

- Contacts
 - Base material – phosphor bronze
 - Contact Normal Force – 100 g nominal
 - Cut edge
 - Plating
 - Mating area – refer to p/n table
 - Solder tails – refer to p/n table
- Housings: black color, glass-reinforced, lead-free solder reflow process compatible thermoplastic, UL94V-0 rated

Temperature rise: Meets the requirement of 30°C ΔT

Cage

- Base material – copper alloy
- Plating – 100μ" Nickel plated

Heat Sink

- Base material – anodized aluminum

Heat Sink Clip

- Base material – steel

Operating temperature -40° to +85°C

Storage temperature -40° to +85°C

QSFP

Ordering Information

Contact Amphenol for additional options

QSFP Cage

U90 - X X X 1 - X X X X

SERIES DESIGNATION

STYLE

- A - One row
- C - One row 1° version

NUMBER OF PORT IN ROW

- 1 - Single port
- Other options being developed

HEAT SINK OPTION

- 1 - No Heat Sink
- 2 - 6.5mm tall Heat Sink and clip
- 3 - 4.2 mm tall Heat Sink and clip
- 4 - 13.5 mm tall Heat Sink and clip
- Other options available

PACKAGING

- 1 - Tray packaging
- T - Tape and reel packaging
- A - Tray packaging, heat sink and clip already assembled on cage

LIGHT PIPES OPTION

- 0 - Standard, Light pipes and clips supplied separately
- 1 - With light pipes installed

OPTIONAL DUST COVER

- 0 - Without dust cover
- D - With dust cover (Ship loose)

PLATING

- 1 - Nickel plated cage

APPLICATION

- 1 - Press Fit Pins - 3 mm Long

Ordering Information

Contact Amphenol for additional options

QSFP Connector Part Numbers

FS1 - R38 - X 0 0 X

R38 - 38 position connector

OPTIONS

- 0 - Standard connector
- 1 - Connector with hold down tabs

PLATING

- 2 - 50µ" nickel under-plate all over, 30µ" gold in mating area/ 100µ" matte tin on tails
- 3 - 50µ" nickel under-plate all over, 15µ" gold in mating area/ 100µ" matte tin on tails



QSFP with 4.2mm Heat Sink option



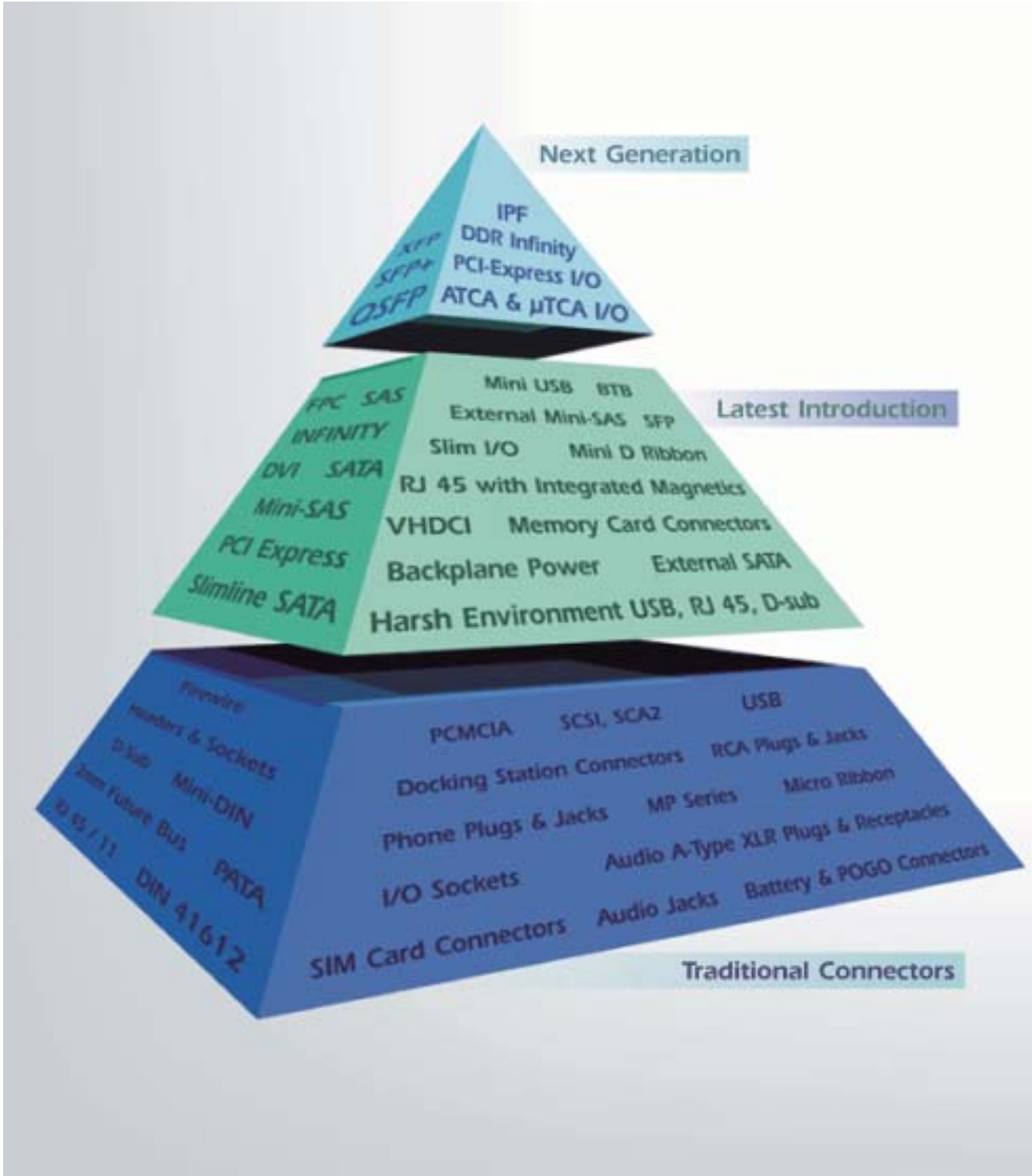
www.amphenolcanada.com/qsfp

Telephone: (416) 291-4401 Fax: (416) 754-8668 E-Mail: sales@amphenolcanada.com

All specifications are subject to change without notice.

Amphenol

Acceleration of New Generation Products



www.amphenolacp.com

Telephone: (416) 291-4401 Fax: (416) 754-8668 E-Mail: sales@amphenolcanada.com

All specifications are subject to change without notice.

HI SPEED CONNECTORS

For more information about INFINITY (4X/12X),
VHDCI, SFP, Mini-SAS, SFP+, XFP, QSFP
or other High Speed products, please contact your local
Amphenol Sales Representative, or contact:

Global Center of Excellence
Amphenol Data/Telecom Products
Phone: +1-416-291-4401
Fax: +1-416-754-8668
Email: sales@amphenolcanada.com
www.amphenolacp.com

EUROPE
Phone: +31-30-635-8000
Fax: +31-30-637-7034
Email: info@amphenol-nl.com

ASIA
Phone: +852-2699-2663
Fax: +852-2688-0974
Email: info@amphenol.com.hk

Amphenol Commercial Products

Americas

Milpitas, CA, USA

Tel: +1-408-546-0397
Fax: +1-408546-0399
Email: info@amphenolacp.com
Web: www.amphenolacp.com

Amphenol®

Interconnection Technology & Communication Group

www.amphenolcanada.com

www.amphenolcanada.com/productsearch/pdf/hispeed_cat.pdf

Telephone: (416) 291-4401 Fax: (416) 754-8668 E-Mail: sales@amphenolcanada.com

All specifications are subject to change without notice.

ADT00020/02/08